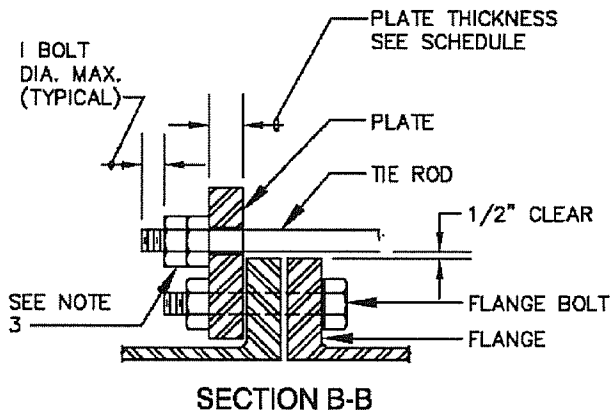


STRAPPING HARNESS DETAIL



NOTES:

1. TIE RODS SHALL CONFORM TO ASTM A-588 SPECIFICATION.
2. STEEL PLATE SHALL CONFORM TO ASTM A-36 SPECIFICATION.
3. INSIDE NUT TO BE HAND TIGHT, AND TWO NUTS SHALL BE TIGHTENED AGAINST EACH OTHER.
4. STRAPPING DESIGN INCLUDES SURGE PRESSURE ADDED TO OPERATING PRESSURE IN P.S.I.
5. WHEN THE STRAPPING ASSEMBLY IS LOCATED NEAR THE FLANGED VALVE, PROVIDE A FLANGED SPOOL PIECE (1' MIN. LENGTH) BETWEEN THE VALVE AND ASSEMBLY IN ORDER TO AVOID STRAPPING DIRECTLY TO THE VALVE.

PIPE DIAM.	MAXIMUM OPERATING PRESSURE	NO. OF RODS	DIA. OF RODS IN	PLATE THICKNESS
4"	125	2	3/4"	3/4"
	250	2	3/4"	3/4"
6"	125	2	3/4"	3/4"
	250	2	3/4"	3/4"
8"	125	2	7/8"	1"
	250	2	7/8"	1 1/8"
10"	125	2	7/8"	1 1/8"
	250	3	7/8"	1 1/8"
12"	125	3	7/8"	1 1/8"
	250	4	7/8"	1 1/8"
14"	125	4	7/8"	1 1/4"
	250	4	1"	1 1/4"
16"	125	4	1"	1 1/4"
	250	4	1 1/8"	1 1/2"
18"	125	4	1"	1 1/2"
	250	6	1"	1 1/2"
20"	125	4	1"	1 1/2"
	250	6	1 1/8"	1 1/2"
24"	125	6	1"	1 1/2"
	250	6	1 1/8"	1 3/4"
30"	125	7	1 1/8"	1 3/4"
	250	7	1 1/2"	2"

STANDARD DETAIL
 METHOD OF STRAPPING
 MECHANICAL COUPLING
 IN VAULTS AND FACILITIES

WASHINGTON TOWNSHIP MUNICIPAL AUTHORITY

DATE	REVISIONS
SCALE NO SCALE	DWG. NO. PRV-6