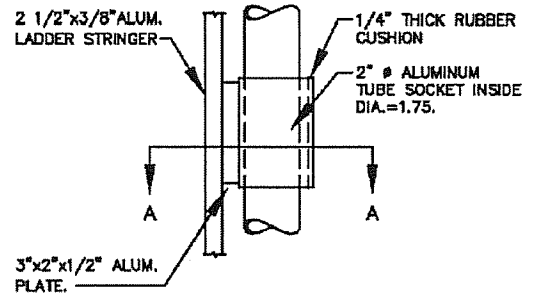
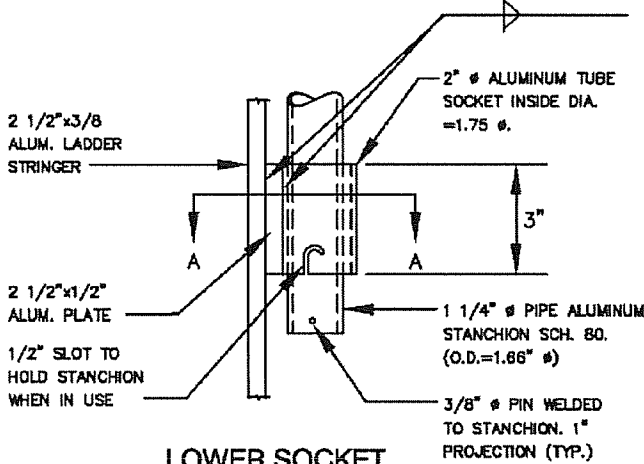
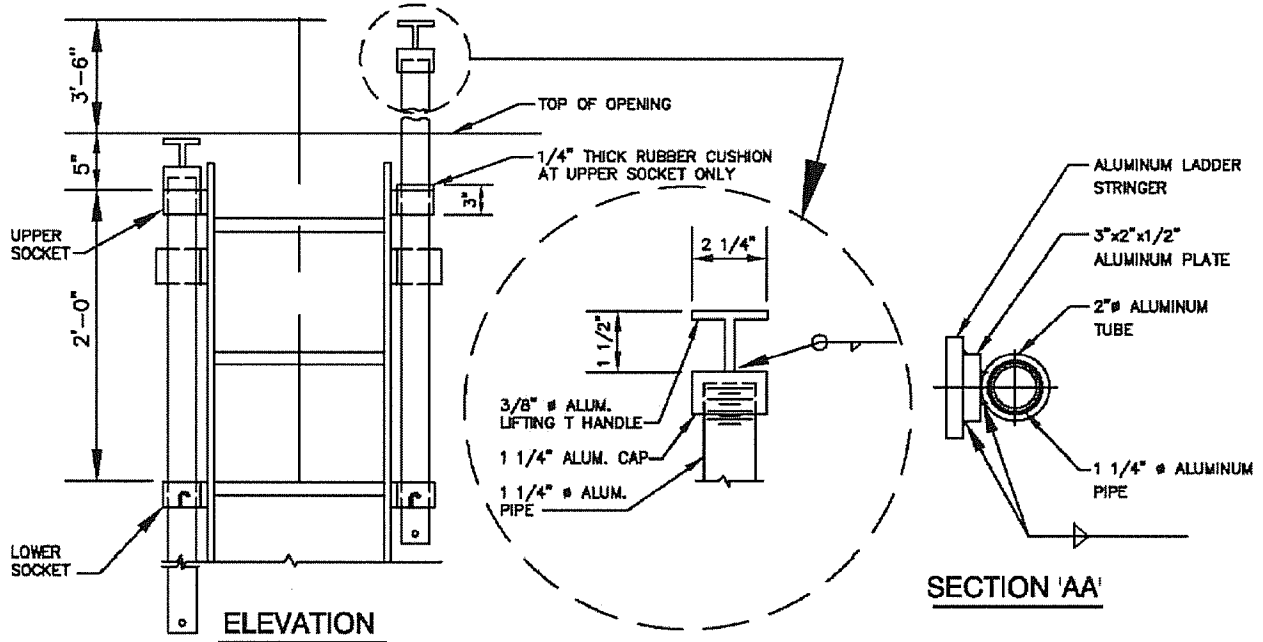


**NOTE:**

1. ALL ALUMINUM SHALL BE 6061-T6 ALLOY.
2. PREFABRICATED CASTING SOCKET MAY BE USED.
3. LOCATION OF TOP SOCKET MAY BE LOWERED IF LIFTING T OBSTRUCTS COVER OF ACCESS WHEN CLOSED.
4. SEE DETAIL M/16.0 FOR LADDER DETAIL.
5. "T" HANDLE SHALL BE ORIENTED PERPENDICULAR TO C. OF RUNG WHEN FULLY EXTENDED AND LOCKED IN PLACE.
6. ALL WELDS SHALL BE MIN. 3/16" WIDE.

**PLAN**



STANDARD DETAIL

LADDER EXTENSION

WASHINGTON TOWNSHIP MUNICIPAL AUTHORITY

DATE	REVISIONS
SCALE NO SCALE	DWG. NO. PRV-8