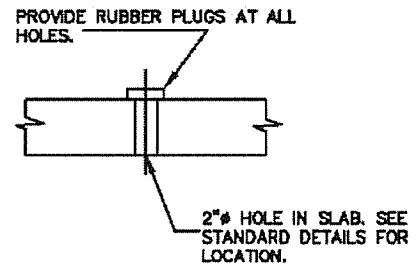
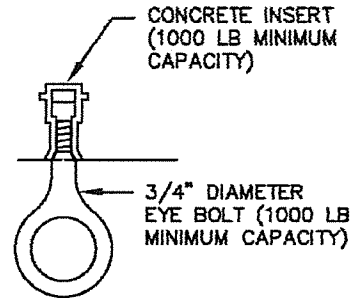


**MANHOLE FRAME AND COVER OR HATCH STACK DETAIL**



**LIFTING HOLE DETAIL**

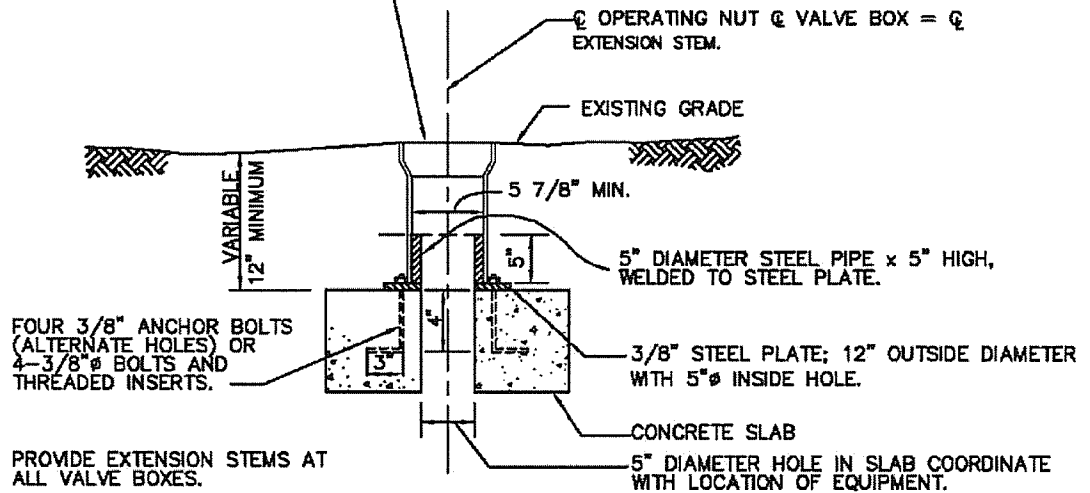


**LIFTING HOOK**

**NOTES:**

1. DO NOT USE HATCHES WHERE VAULT OPENINGS ARE LOCATED IN A STREET OR OTHER LOCATIONS SUBJECTED TO HIGH DENSITY TRAFFIC.

USE STANDARD VALVE BOX COVER AND TOP SECTION. THE LENGTH WILL VARY AS REQUIRED AND FLANGE SHALL BE OMITTED. EXCESS LENGTH IF ANY MAY BE CUT OFF IN FIELD. USING STANDARD METHODS FOR CUTTING C.I. PIPE.



**VALVE BOX SLAB OPENING**

STANDARD DETAIL  
TOP SLAB DETAILS  
FOR VAULTS

WASHINGTON TOWNSHIP MUNICIPAL AUTHORITY

DATE	REVISIONS
SCALE NO SCALE	DWG. NO. V-2