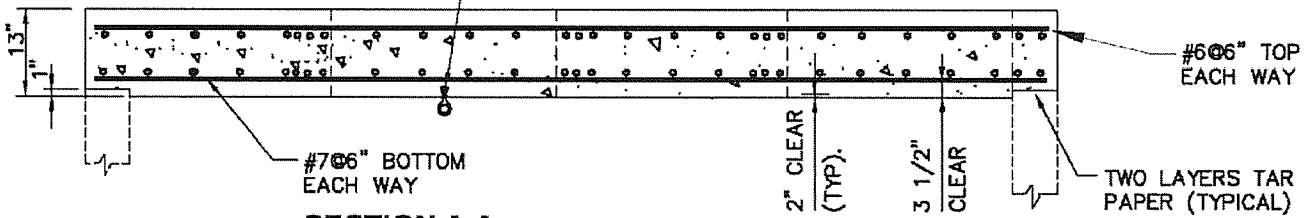


PLAN

PROVIDE LIFTING HOOKS OVER PRESSURE REDUCING VALVE WHERE ACCESS IS NOT PROVIDED. SEE DETAIL V-2



SECTION A-A

STRUCTURAL NOTES:

- 1. REINFORCING STEEL: ASTM A615, GRADE 60
- 2. PRECAST CONCRETE: $f'_c=5,000$ PSI @ 28 DAYS.
- 3. CAST IN PLACE CONCRETE: $f'_c=4,000$ PSI @ 28 DAYS.
- 4. TOP SLAB HAVE BEEN DESIGNED FOR THE FOLLOWING LOADING CONDITIONS: H20LL+0% IMPACT+ 3.5' MAXIMUM EARTH COVER H20LL + 30% IMPACT+ 1' EARTH COVER
- 5. FOR PRECAST CONCRETE PROVIDE ADDITIONAL REINFORCING AS REQUIRED FOR LIFTING LOADS

VALVE REMOVAL OPENING NOTES:

- 1. FOR 4" VALVE NO OPENINGS IS REQUIRED. PROVIDE 1 PIECE TOP SLAB REINFORCED AS PER DETAIL V-3.

STANDARD DETAIL
CAST IN PLACE AND PRECAST
CONCRETE TOP SLAB FOR
TYPE "1" LAYOUT PRESSURE
REDUCING VALVE VAULTS

WASHINGTON TOWNSHIP MUNICIPAL AUTHORITY

DATE	REVISIONS

SCALE
NO SCALE

DWG. NO.
V-4