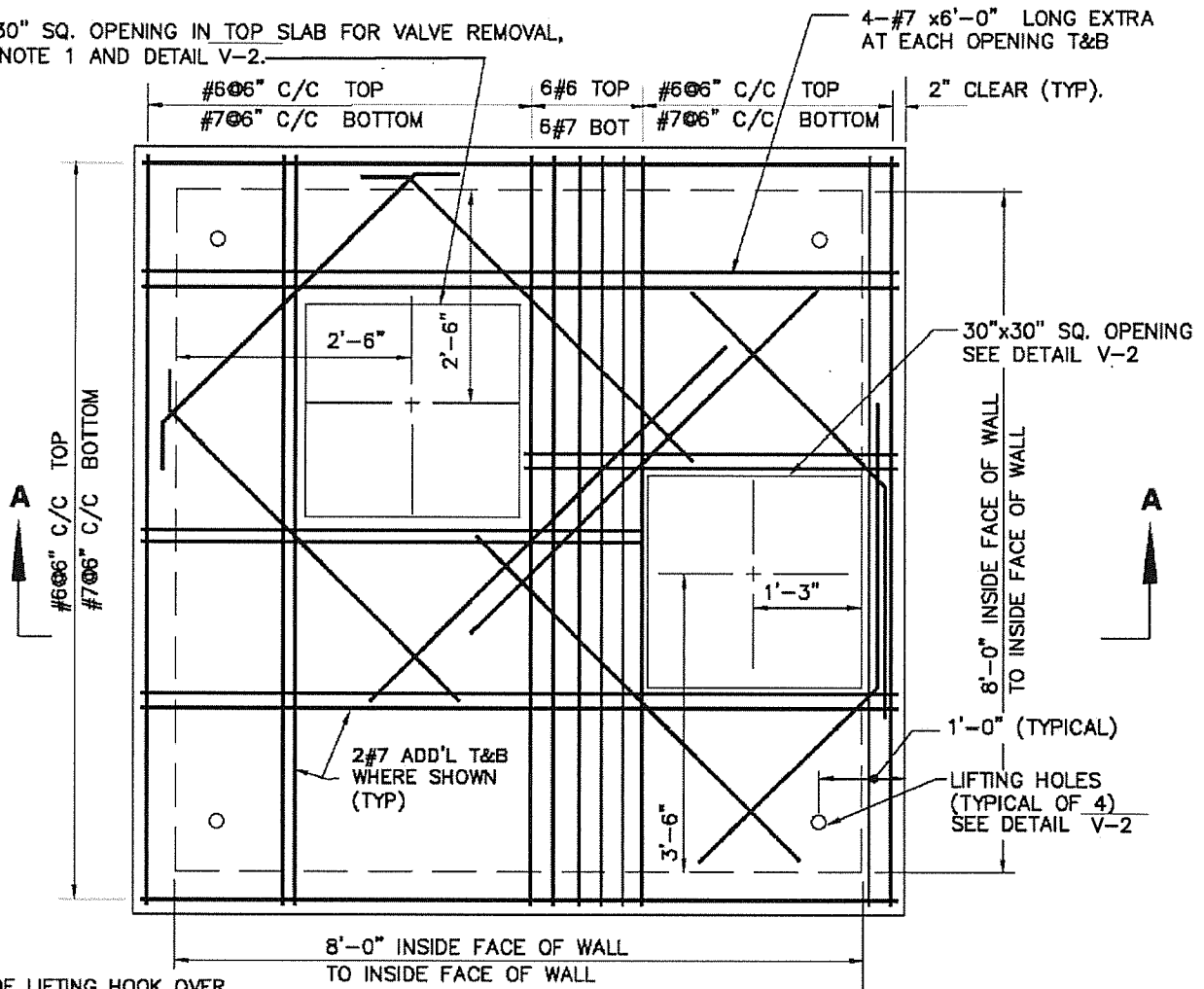
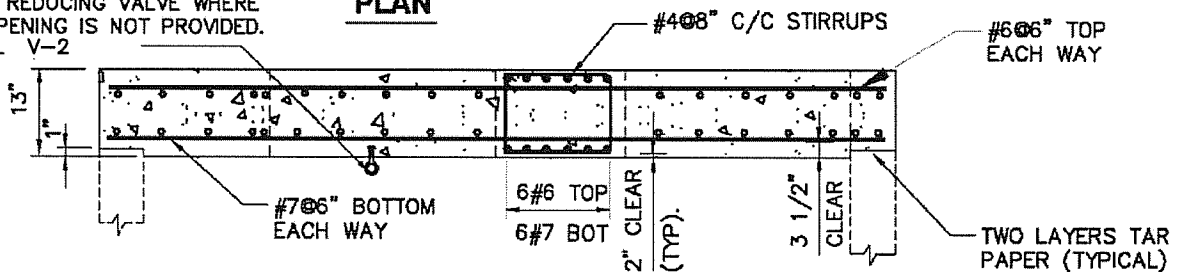


30"x30" SQ. OPENING IN TOP SLAB FOR VALVE REMOVAL,  
SEE NOTE 1 AND DETAIL V-2.



**PLAN**

PROVIDE LIFTING HOOK OVER PRESSURE REDUCING VALVE WHERE ACCESS OPENING IS NOT PROVIDED. SEE DETAIL V-2



**SECTION A-A**

**STRUCTURAL NOTES:**

**VALVE REMOVAL OPENING NOTES:**

1. FOR 4" VALVE NO OPENINGS IS REQUIRED. PROVIDE 1 PIECE TOP SLAB REINFORCED AS PER DETAIL V-3

1. REINFORCING STEEL: ASTM A615, GRADE 60
2. PRECAST CONCRETE:  $f_c=5,000\text{PSI}$  @ 28 DAYS.
3. CAST IN PLACE CONCRETE:  $f_c=4,000\text{PSI}$  @ 28 DAYS.
4. TOP SLAB HAVE BEEN DESIGNED FOR THE FOLLOWING LOADING CONDITIONS: H2OLL+0% IMPACT+ 3.5' MAXIMUM EARTH COVER H2OLL + 30% IMPACT+ 1' EARTH COVER
5. FOR PRECAST CONCRETE PROVIDE ADDITIONAL REINFORCING AS REQUIRED FOR LIFTING LOADS

STANDARD DETAIL  
 CAST IN PLACE AND PRECAST  
 CONCRETE TOP SLAB FOR  
 TYPE "2" LAYOUT PRESSURE  
 REDUCING VALVE VAULTS

WASHINGTON TOWNSHIP MUNICIPAL AUTHORITY

DATE	REVISIONS
SCALE NO SCALE	DWG. NO. V-5