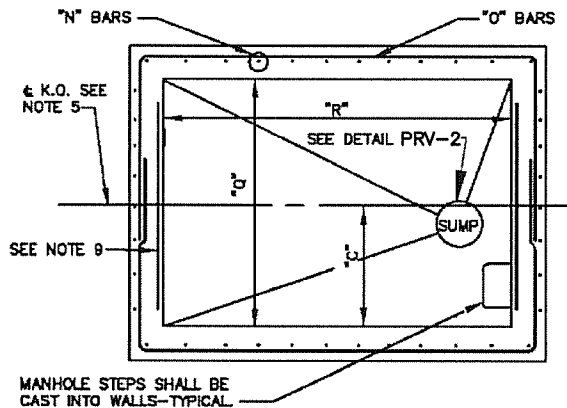
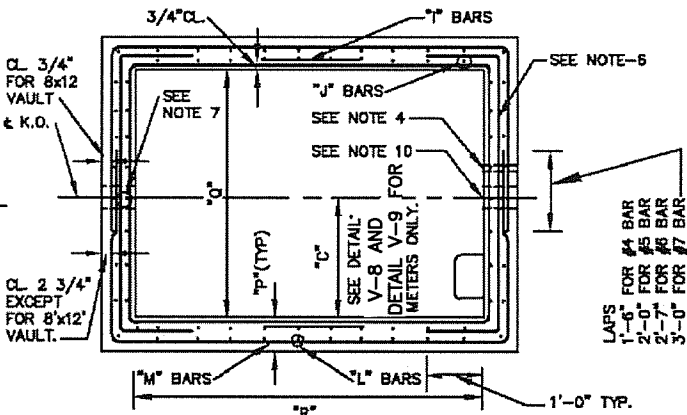


PRECAST CONCRETE VAULT NOTES:

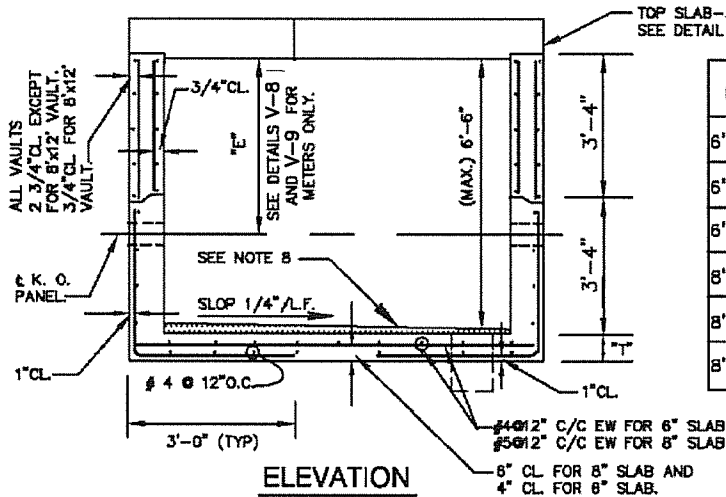
1. $f'_c=5000$ PSI. @ 28 DAYS.
2. $f_y=60,000$ PSI.
3. VAULTS ARE DESIGNED FOR THE FOLLOWING CONDITIONS. (A). H₂O LOADING & 1'-0" COVER + 35% IMPACT. (B). H₂O L L + 0% IMPACT + 5'-0" MAXIMUM EARTH COVER.
4. DRILL BYPASS HOLE IN FIELD IF REQUIRED.
5. PROVIDE K.O. PANELS AT PIPE PASSING THRU WALL. NO REINFORCEMENT SHALL BE PLACED IN K.O. PANEL. MAXIMUM SIZE OF K.O. PANEL TO BE PIPE I.D. + 6" EACH SIDE.
6. PROVIDE ADDITIONAL BARS OVER K.O. AS SHOWN. SIZE AND NUMBER OF ADDITIONAL BARS TO BE SAME AS SIZE AND NUMBER OF "M" BARS DISCONTINUED DUE TO KNOCK OUT.
7. PROVIDE ADDITIONAL 2#4 BARS VERTICAL EACH SIDE OF K.O. 3'-0" LONG IN TOP AND BOTTOM BARREL.
8. 1" MINIMUM THICK CEMENT MORTAR WEARING COURSE @ SUMP.
9. PROVIDE 2#5x5'-0" LONG BELOW K.O.
10. SEE DETAILS V-8 AND V-9 FOR VAULT SIZE REQUIRED AND METER INSTALLATION DETAILS.
11. ADDITIONAL BARS PROVIDED AROUND K.O. SHALL BE 1" CLEAR OF K.O.



PLAN-BOTTOM BARREL



PLAN-TOP BARREL



ELEVATION

Q	R	T	P	L	M	N	O	I	J
6'-0"	6'-0"	6	6	#4 18"	#5 12"	#5 10"	#4 18"	-	-
6'-0"	8'-0"	6	6	#4 18"	#5 8"	#5 10"	#4 18"	-	-
6'-0"	10'-0"	6	6	#4 18"	#6 7"	#5 10"	#4 18"	-	-
8'-0"	8'-0"	6	6	#4 18"	#6 9"	#5 10"	#4 18"	-	-
8'-0"	10'-0"	6	6	#4 18"	#7 9"	#5 6"	#4 18"	-	-
8'-0"	12'-0"	8	8	#3 12"	#6 10"	#5 9"	#4 12"	#6 10"	#3 12"

STANDARD DETAIL

PRECAST CONCRETE VAULTS FOR METERS

WASHINGTON TOWNSHIP MUNICIPAL AUTHORITY

DATE	REVISIONS
SCALE NO SCALE	DWG. NO. V-7