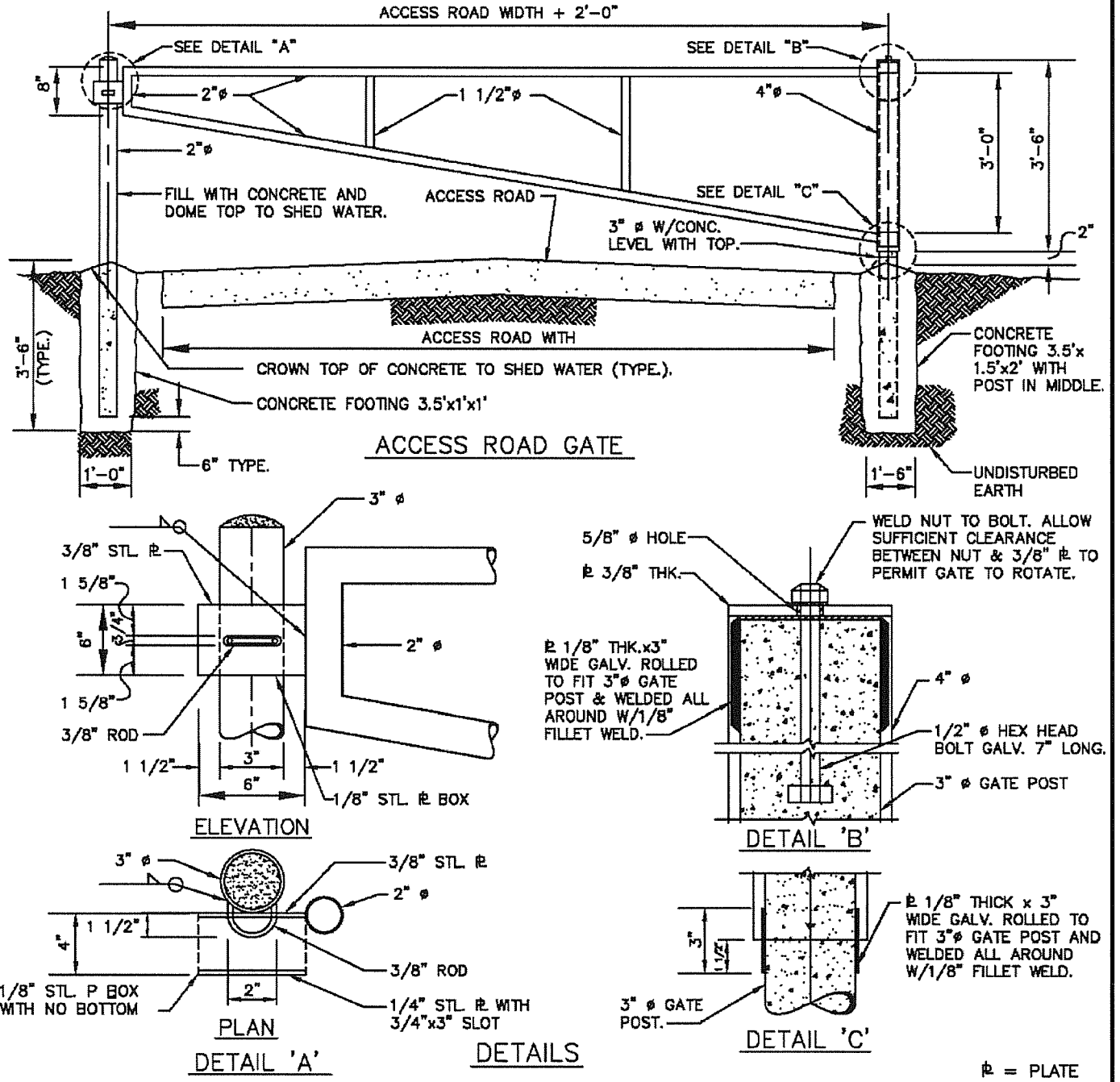


NOTES

1. ALL METAL USED IN THE MANUFACTURE OF THE ACCESS ROAD GATE TO BE HOT DIP GALVANIZED. ALL WELDS & PIPE TO BE PAINTED & TOUCHED UP IN ACCORDANCE WITH SPECIFICATION AND IN ACCORDANCE WITH MANUFACTURERS RECOMMENDATIONS.
2. ALL JOINTS TO BE WELDED ALL AROUND WITH 3/16" WELDS.
3. ALL PIPE TO BE SCHEDULE 40 STEEL, DIAMETERS SHOWN ARE NOMINAL PIPE SIZE.
4. PADLOCK WILL BE FURNISHED BY WTMA.
5. CONTRACTOR SHALL PROVIDE AN ADDITIONAL 3"Ø ROD. LOCATE TO HOLD GATE IN AN OPEN POSITION 90° FROM THAT SHOWN BELOW.
6. GATE TO SWING IN TOWARDS WTMA PROPERTY.
7. WIDTH OF GATE NOT TO EXCEED 16 FEET.



STANDARD DETAIL
ACCESS ROAD GATE

WASHINGTON TOWNSHIP MUNICIPAL AUTHORITY

DATE	REVISIONS

SCALE
NO SCALE

DWG. NO.
W-6